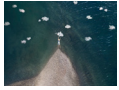


Ebb + Flow Exhibition Checklist



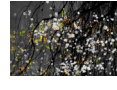
Margeaux Walter
Cumulus, 2019
dye sublimation on aluminum
Edition 1/5
40 x 53 inches
\$8,500



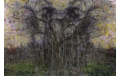
Margeaux Walter
Island, 2018
dye sublimation on aluminum
Edition 1/7
30 x 40 inches
\$7,000



David Reinfeld
Feynman's Notes #49, 2021
dye sublimation on aluminum
Edition 1/7
30 x 46 inches
\$4,900



David Reinfeld
Feynman's Notes #50, 2021
dye sublimation on aluminum
Edition 1/7
30 x 46 inches
\$4,900



David Reinfeld
Feynman's Notes #46, 2018
archival pigment print
Edition 1/7
24 x 36 inches
\$3,100



David Reinfeld
Feynman's Notes #48, 2021
archival pigment print
Edition 1/7
24 x 36 inches
\$4,000



Margeaux Walter
Hang Loose, 2018
dye sublimation on aluminum
Edition 2/5
40 x 53 inches
\$8,500



Margeaux Walter
Impression, Nymphs, 2019
dye sublimation on aluminum
Edition 1/5
40 x 53 inches
\$8,500



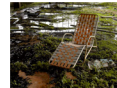
Margeaux Walter
Perennial, 2019
dye sublimation on aluminum
Edition 1/7
30 x 40 inches
\$7,000



Margeaux Walter
Don't Feed the Birds, 2018
dye sublimation on aluminum
Edition 1/7
30 x 40 inches
\$7,000



Margeaux Walter
Hefty Harvest, 2019
dye sublimation on aluminum
Edition 1/7
30 x 40 inches
\$7,000



Margeaux Walter
Getaway, 2014
photographic lenticular
Edition 3/7
40 x 40 inches
\$10,500



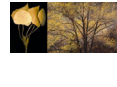
Margeaux Walter
Proof, 2019
dye sublimation on aluminum
Edition 1/7
30 x 40 inches
\$7,000



Margeaux Walter
Into the Wild, 2019
dye sublimation on aluminum
Edition 1/7
30 x 40 inches
\$7,000



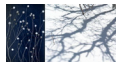
David Reinfeld
Feynman's Notes #47, 2018
archival pigment print
Edition 1/7
36 x 24 inches
\$3,100



Brenda Biondo
*Plains Cottonwood/
Narrowleaf Cottonwood*, 2013
archival inkjet print
Edition 3/10
20 x 45 inches
\$4,000



Brenda Biondo
Meadow Rue/Creek Bank, 2012
archival inkjet print
Edition 4/10
20 x 38 inches
\$4,000



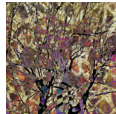
Brenda Biondo
Winter Stems/Gambel Oaks, 2012
archival inkjet print
Edition 7/10
20 x 38 inches
\$3,450



David Reinfeld
Feynman's Notes #17, 2018
archival pigment print
Edition 1/15
18 x 24 inches
\$2,100



David Reinfeld
Feynman's Notes #1, 2018
archival pigment print
Edition 1/15
18 x 24 inches
\$2,100



David Reinfeld
Feynman's Notes #30, 2018
archival pigment print
Edition 1/15
29 x 29 inches
\$3,150



David Reinfeld
Feynman's Notes #16, 2018
archival pigment print
Edition 1/15
18 x 24 inches
\$2,100

Ebb + Flow

March 29, 2021 – July 29, 2021



Margeaux Walter, *Cumulo*, 2019, archival pigment print, 40 x 53 inches

As we collectively enter a time abundant with hope and new beginnings, the TC Energy Center's Spring art exhibition studies themes of lifecycles and rebirth. *Ebb + Flow* was organized in partnership with Houston based gallery Foto Relevance to highlight the work of 3 exciting artists - Margeaux Walter, David Reinfeld, and Brenda Biondo. Each artist's practice presents various creative photography methods of manipulation or staging to create thought provoking imagery centered around nature.

Ebb + Flow revolves around rhythms of natural world - the cycles that surround us in water, air, and living flora - and the viewers mirror these cycles as they circumambulate the walls of the exhibition. Upon entering the space, the title wall introduces work by Margeaux Walter, who documents staged, site-specific installations using the environment as her platform. Many images in the series feature the artist, who inserts herself as a character in the narratives she creates. Walter combs through Google Earth to find dynamic sites to shoot, commenting on how technology influences our relationship with nature. These aerial-perspective works toe the line between what is real and what is constructed, echoing an underlying concern for climate change and the role which technology and politics play in caring for the earth.

Inspired by the application of physics to the natural world, David Reinfeld's series *Feynman's Notes* utilizes photographic composites to explore the vibrancy of nature and the details that might escape our cursory gaze. Reinfeld's investigation of trees begins at the quantum scale and slowly backs out to reveal the whole; the chaotic bits and pieces somehow transition to something recognizable and familiar. Deeply interested in conservation issues, Brenda Biondo's *Remnants and Revival* series examines the nuances of "natural" versus "unnatural" landscapes in the American West. Biondo's diptychs allude to the endless cycles of reconstruction & destruction, and the role that humans play in nature's rhythms. Each diptych combines an image of a protected Colorado landscape alongside a detail of a wild-growing plant. Similar to Reinfeld, she examines the building blocks which make up the larger ecosystem, calling to attention the importance of each and every organism.

While navigating the exhibition, the viewer is encouraged to question what is natural and what is constructed—either by digital manipulation, juxtaposition, or physical modification of the environment by the artist—and furthermore reflect on this time of new beginnings. *Ebb + Flow* urges us to consider our own role within the environment—how we impact it daily, and how it similarly impacts us. Humankind is not above the cycle of nature; rather, we are deeply carved into it. This exhibition was organized by Kinzelman Art Consulting in collaboration with Foto Relevance Gallery on behalf of M-M Properties. For additional information, please call Kinzelman Art Consulting at 713.533.9923 or reach out to Kimberly@kinzelmanart.com.